

## PHOTOMETRIC RESULT

<b>Name :</b>			
<b>File :</b>	02 MXLK-60.IES	<b>Length :</b>	0.000 m
<b>Report No. :</b>	20170518	<b>Width :</b>	0.000 m
<b>Catalog No. :</b>		<b>Height :</b>	0.000 m
<b>Lamp Shape :</b>	Point	<b>Operator :</b>	MIN
<b># of Lamp :</b>	1		
<b>Lum Flux :</b>	7683.03 lm		
<b>Date :</b>	2017-05-18		
<b>Comments :</b>			

## Information

### Description :

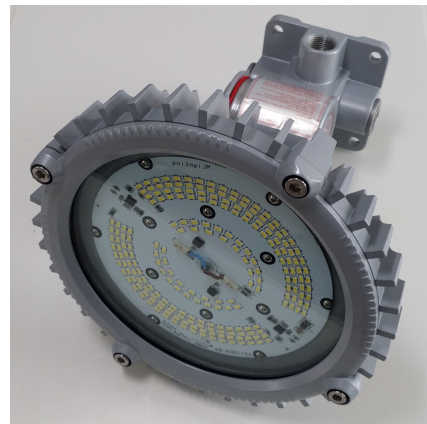
[TEST] MXLK-60  
 [DATE] 2017.05.18  
 [MANUFAC] (주)크로스텍  
 [LUMINAIRE]  
 Total Luminous Flux : 7683.0 lm  
 Luminous Efficiency : 120.51 lm/W  
 - Avg. Voltage = 219.82(V)  
 - Avg. Current = 292.29(mA)  
 - Avg. Wattage = 63.76(W)  
 - Avg. PF = 0.9923  
 - Avg. Frequency = 60.0014(Hz)

### Luminaire Test Details :

Photometric Type : Type C  
 Number of Lamps : 1  
 Lumens per Lamp : 7683.03  
 Input Watt : 120.51

### Luminous Dimension :

Width : 0.000 m  
 Length : 0.000 m  
 Height : 0.000 m  
 Shape : Point



## PHOTOMETRIC RESULT

<b>Name :</b>			
<b>File :</b>	02 MXLK-60.IES	<b>Length :</b>	0.000 m
<b>Report No. :</b>	20170518	<b>Width :</b>	0.000 m
<b>Catalog No. :</b>		<b>Height :</b>	0.000 m
<b>Lamp Shape :</b>	Point	<b>Operator :</b>	MIN
<b># of Lamp :</b>	1		
<b>Lum Flux :</b>	7683.03 lm		
<b>Date :</b>	2017-05-18		
<b>Comments :</b>			

## Flux Data [1/2]

Elevation	Cone	Lumens	Cumulative	Lamp %	Luminaire %
0.0°	0.0° - 1.3°	3.8	3.8	0.0	0.0
2.5°	1.3° - 3.8°	30.1	33.9	0.4	0.4
5.0°	3.8° - 6.3°	60.1	94.0	1.2	1.2
7.5°	6.3° - 8.8°	89.8	183.8	2.4	2.4
10.0°	8.8° - 11.3°	119.0	302.8	3.9	3.9
12.5°	11.3° - 13.8°	147.3	450.1	5.9	5.9
15.0°	13.8° - 16.3°	174.7	624.8	8.1	8.1
17.5°	16.3° - 18.8°	200.7	825.5	10.7	10.7
20.0°	18.8° - 21.3°	225.2	1050.7	13.7	13.7
22.5°	21.3° - 23.8°	248.3	1299.0	16.9	16.9
25.0°	23.8° - 26.3°	269.6	1568.6	20.4	20.4
27.5°	26.3° - 28.8°	288.8	1857.4	24.2	24.2
30.0°	28.8° - 31.3°	306.0	2163.4	28.2	28.1
32.5°	31.3° - 33.8°	321.1	2484.4	32.3	32.3
35.0°	33.8° - 36.3°	333.7	2818.1	36.7	36.7
37.5°	36.3° - 38.8°	343.6	3161.7	41.2	41.1
40.0°	38.8° - 41.3°	350.8	3512.5	45.7	45.7
42.5°	41.3° - 43.8°	354.9	3867.5	50.3	50.3
45.0°	43.8° - 46.3°	356.1	4223.5	55.0	55.0
47.5°	46.3° - 48.8°	354.3	4577.8	59.6	59.6
50.0°	48.8° - 51.3°	349.2	4926.9	64.1	64.1
52.5°	51.3° - 53.8°	341.3	5268.2	68.6	68.5
55.0°	53.8° - 56.3°	330.2	5598.4	72.9	72.8
57.5°	56.3° - 58.8°	315.9	5914.3	77.0	77.0
60.0°	58.8° - 61.3°	298.7	6213.0	80.9	80.8
62.5°	61.3° - 63.8°	278.7	6491.6	84.5	84.5
65.0°	63.8° - 66.3°	255.8	6747.5	87.8	87.8
67.5°	66.3° - 68.8°	230.8	6978.2	90.8	90.8
70.0°	68.8° - 71.3°	203.8	7182.0	93.5	93.5
72.5°	71.3° - 73.8°	173.4	7355.4	95.7	95.7
75.0°	73.8° - 76.3°	132.9	7488.3	97.5	97.4
77.5°	76.3° - 78.8°	92.3	7580.6	98.7	98.6
80.0°	78.8° - 81.3°	57.6	7638.2	99.4	99.4
82.5°	81.3° - 83.8°	30.6	7668.8	99.8	99.8

## PHOTOMETRIC RESULT

<b>Name :</b>			
<b>File :</b>	02 MXLK-60.IES	<b>Length :</b>	0.000 m
<b>Report No. :</b>	20170518	<b>Width :</b>	0.000 m
<b>Catalog No. :</b>		<b>Height :</b>	0.000 m
<b>Lamp Shape :</b>	Point	<b>Operator :</b>	MIN
<b># of Lamp :</b>	1		
<b>Lum Flux :</b>	7683.03 lm		
<b>Date :</b>	2017-05-18		
<b>Comments :</b>			

## Flux Data [2/2]

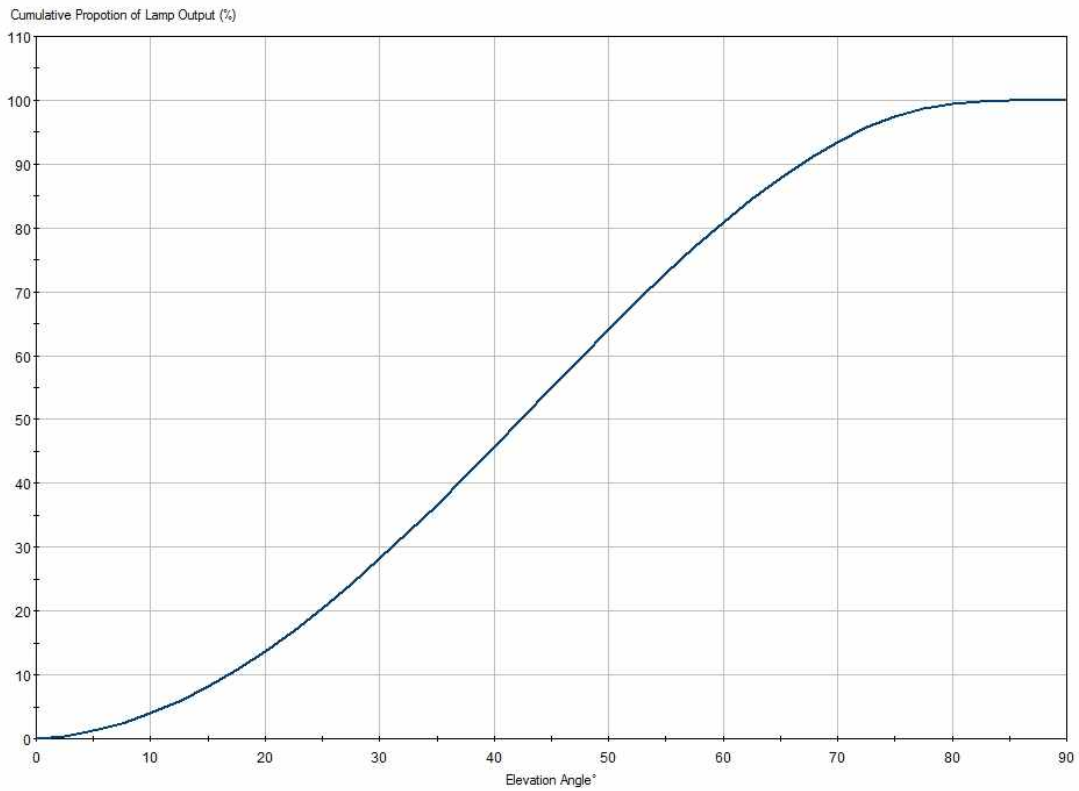
Elevation	Cone	Lumens	Cumulative	Lamp %	Luminaire %
85.0°	83.8° - 86.3°	10.0	7678.9	99.9	99.9
87.5°	86.3° - 88.8°	4.8	7683.6	100.0	100.0
90.0°	88.8° - 90.0°	1.6	7685.2	100.0	100.0

Light Output Ratio Luminaire(LORL) = 100.0%  
 DLOR = 100.0% ULOR = 0.0%

## PHOTOMETRIC RESULT

<b>Name :</b>			
<b>File :</b>	02 MXLK-60.IES	<b>Length :</b>	0.000 m
<b>Report No. :</b>	20170518	<b>Width :</b>	0.000 m
<b>Catalog No. :</b>		<b>Height :</b>	0.000 m
<b>Lamp Shape :</b>	Point	<b>Operator :</b>	MIN
<b># of Lamp :</b>	1		
<b>Lum Flux :</b>	7683.03 lm		
<b>Date :</b>	2017-05-18		
<b>Comments :</b>			

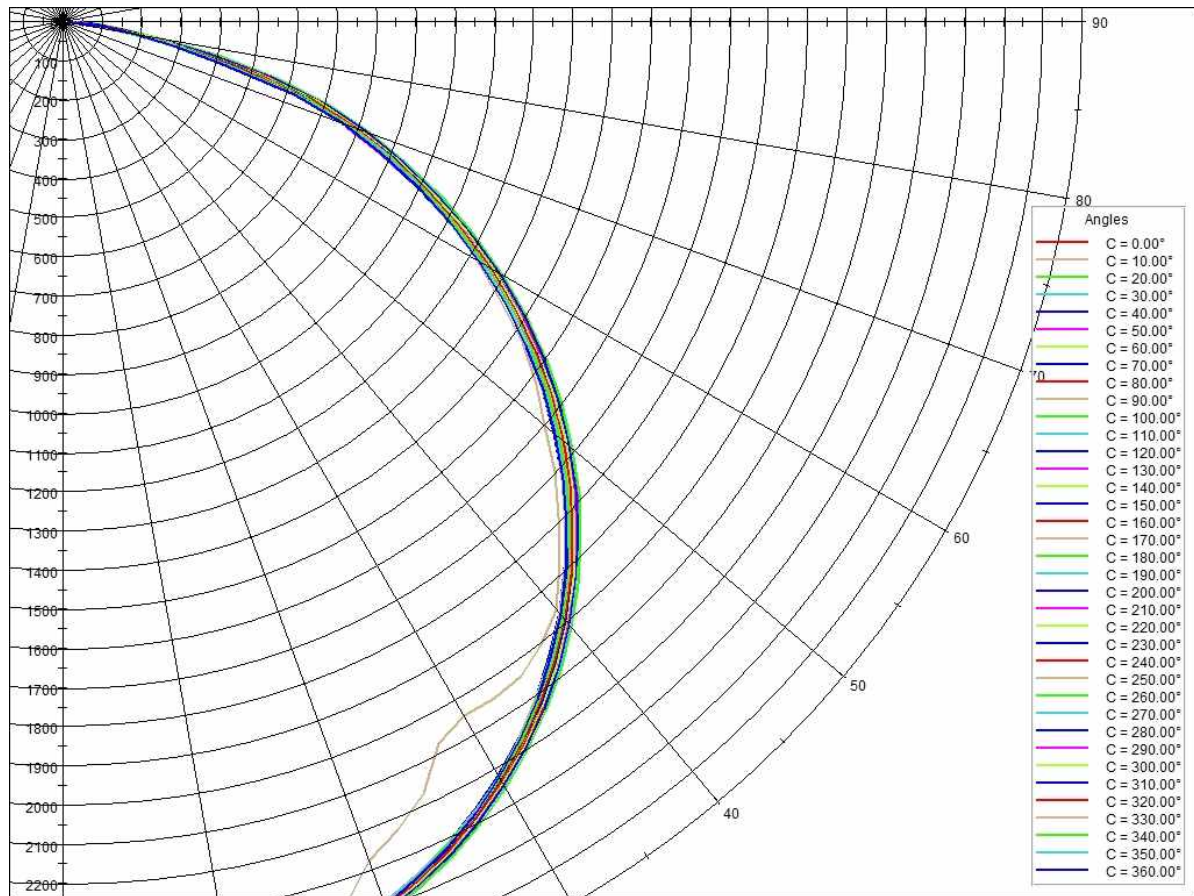
## Flux Diagram



## PHOTOMETRIC RESULT

<b>Name :</b>			
<b>File :</b>	02 MXLK-60.IES	<b>Length :</b>	0.000 m
<b>Report No. :</b>	20170518	<b>Width :</b>	0.000 m
<b>Catalog No. :</b>		<b>Height :</b>	0.000 m
<b>Lamp Shape :</b>	Point	<b>Operator :</b>	MIN
<b># of Lamp :</b>	1		
<b>Lum Flux :</b>	7683.03 lm		
<b>Date :</b>	2017-05-18		
<b>Comments :</b>			

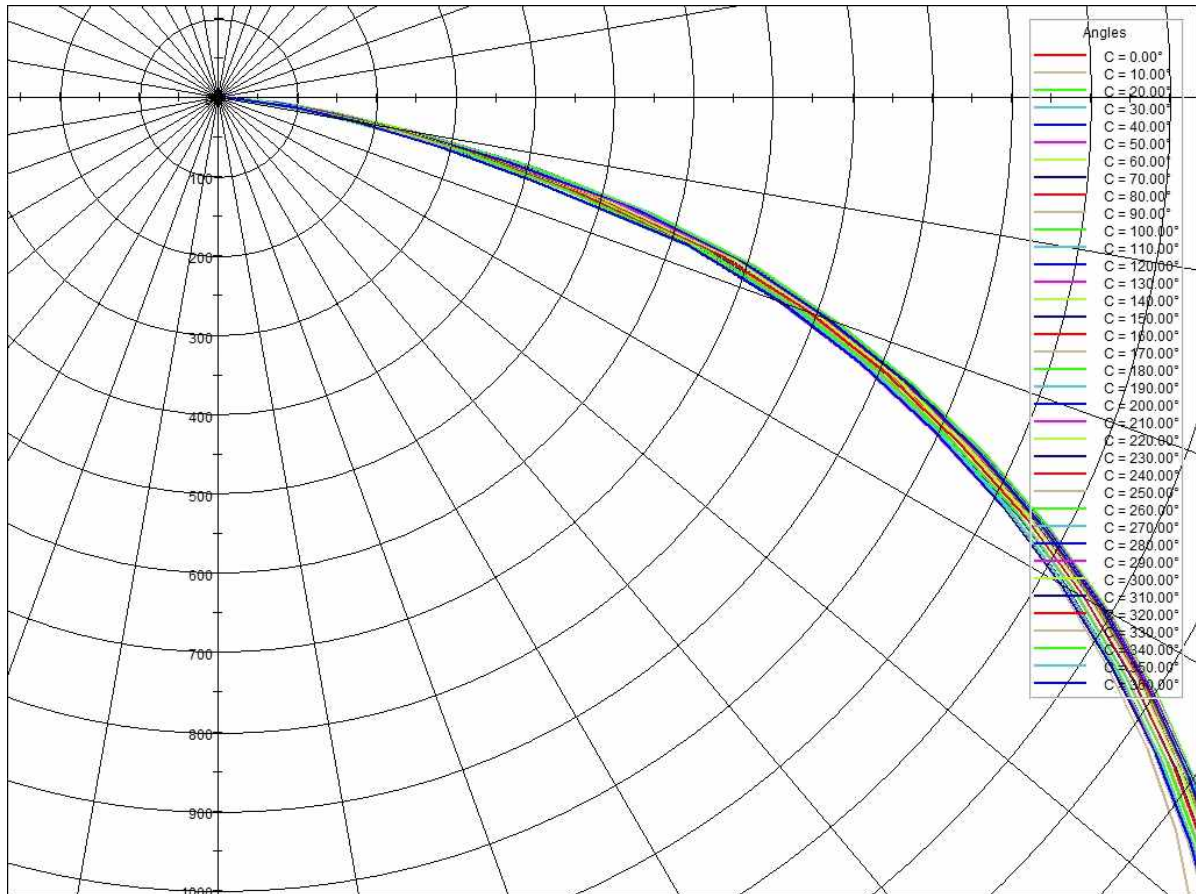
## Polar Diagram



## PHOTOMETRIC RESULT

<b>Name :</b>			
<b>File :</b>	02 MXLK-60.IES	<b>Length :</b>	0.000 m
<b>Report No. :</b>	20170518	<b>Width :</b>	0.000 m
<b>Catalog No. :</b>		<b>Height :</b>	0.000 m
<b>Lamp Shape :</b>	Point	<b>Operator :</b>	MIN
<b># of Lamp :</b>	1		
<b>Lum Flux :</b>	7683.03 lm		
<b>Date :</b>	2017-05-18		
<b>Comments :</b>			

## Polar Diagram (10%)

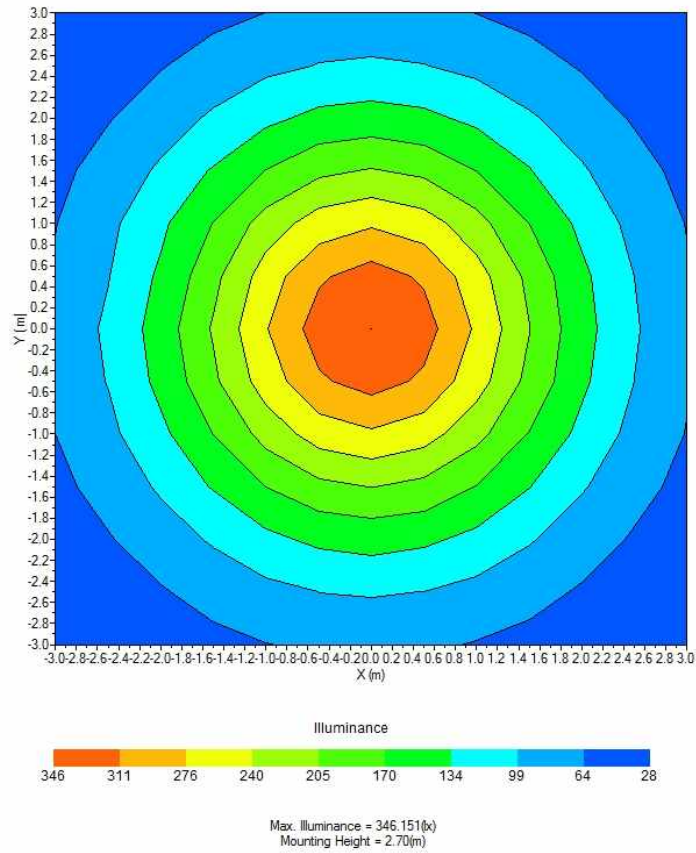




## PHOTOMETRIC RESULT

<b>Name :</b>			
<b>File :</b>	02 MXLK-60.IES	<b>Length :</b>	0.000 m
<b>Report No. :</b>	20170518	<b>Width :</b>	0.000 m
<b>Catalog No. :</b>		<b>Height :</b>	0.000 m
<b>Lamp Shape :</b>	Point	<b>Operator :</b>	MIN
<b># of Lamp :</b>	1		
<b>Lum Flux :</b>	7683.03 lm		
<b>Date :</b>	2017-05-18		
<b>Comments :</b>			

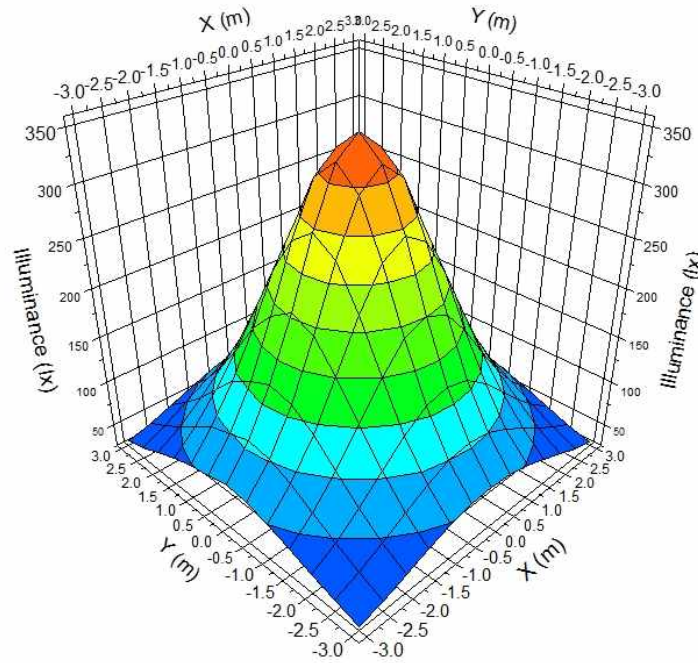
## ISO Lux Diagram



## PHOTOMETRIC RESULT

<b>Name :</b>			
<b>File :</b>	02 MXLK-60.IES	<b>Length :</b>	0.000 m
<b>Report No. :</b>	20170518	<b>Width :</b>	0.000 m
<b>Catalog No. :</b>		<b>Height :</b>	0.000 m
<b>Lamp Shape :</b>	Point	<b>Operator :</b>	MIN
<b># of Lamp :</b>	1		
<b>Lum Flux :</b>	7683.03 lm		
<b>Date :</b>	2017-05-18		
<b>Comments :</b>			

## 3D Lux Web



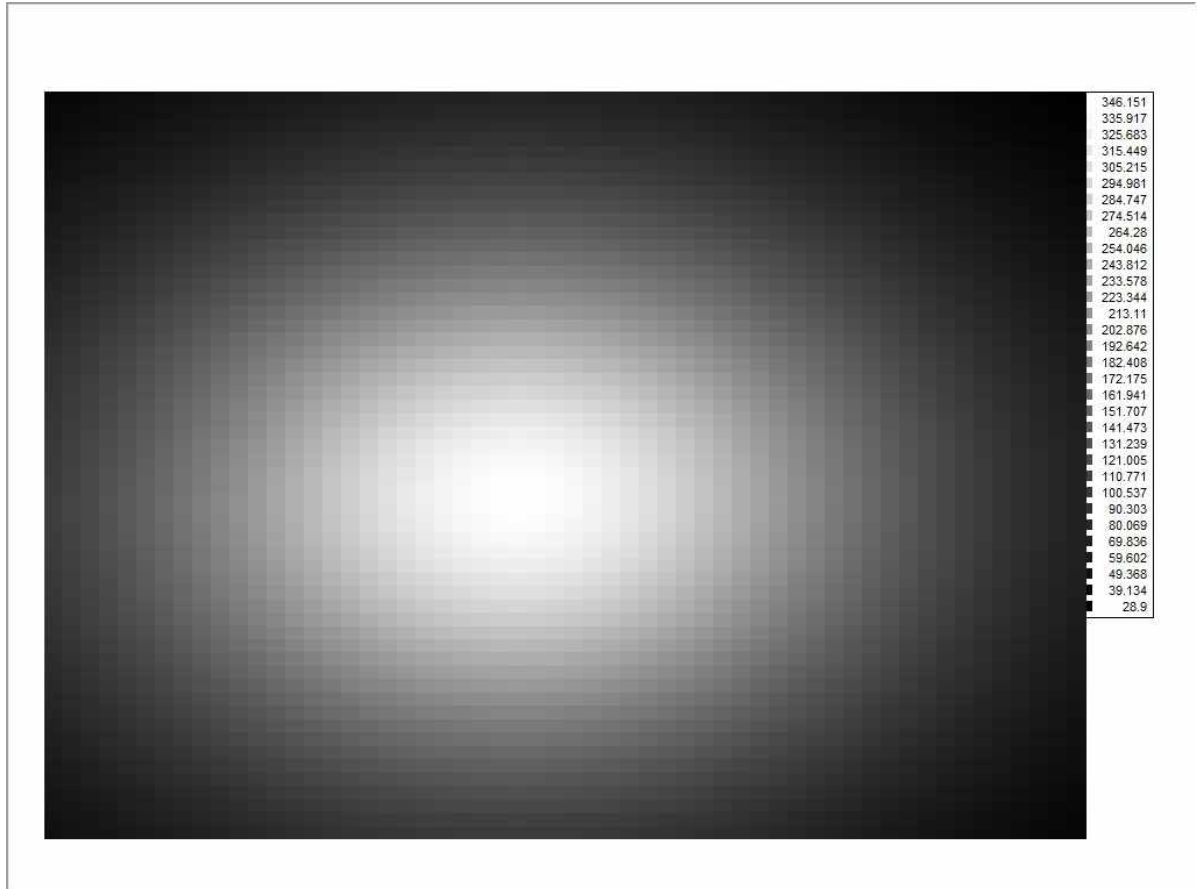
Max. Illuminance = 346.151(lx)  
Mounting Height = 2.70(m)



## PHOTOMETRIC RESULT

<b>Name :</b>			
<b>File :</b>	02 MXLK-60.IES	<b>Length :</b>	0.000 m
<b>Report No. :</b>	20170518	<b>Width :</b>	0.000 m
<b>Catalog No. :</b>		<b>Height :</b>	0.000 m
<b>Lamp Shape :</b>	Point	<b>Operator :</b>	MIN
<b># of Lamp :</b>	1		
<b>Lum Flux :</b>	7683.03 lm		
<b>Date :</b>	2017-05-18		
<b>Comments :</b>			

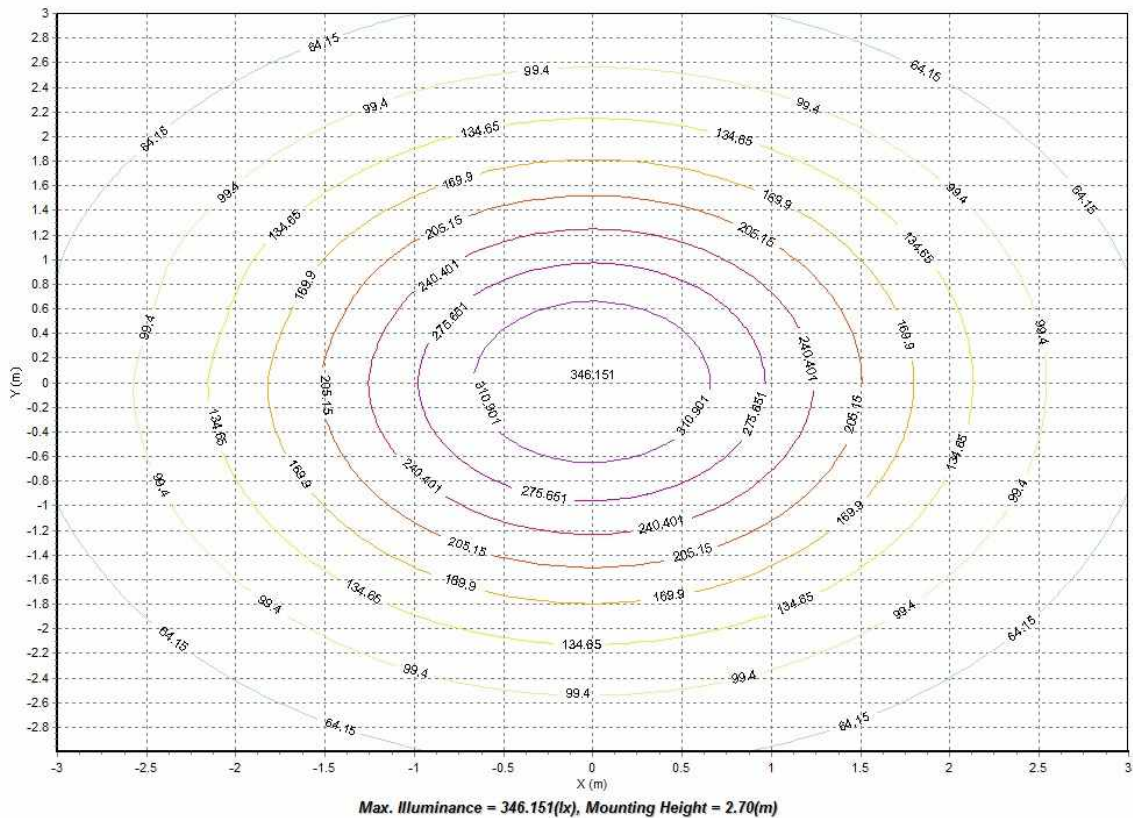
## Grayed Illuminance



## PHOTOMETRIC RESULT

<b>Name :</b>			
<b>File :</b>	02 MXLK-60.IES	<b>Length :</b>	0.000 m
<b>Report No. :</b>	20170518	<b>Width :</b>	0.000 m
<b>Catalog No. :</b>		<b>Height :</b>	0.000 m
<b>Lamp Shape :</b>	Point	<b>Operator :</b>	MIN
<b># of Lamp :</b>	1		
<b>Lum Flux :</b>	7683.03 lm		
<b>Date :</b>	2017-05-18		
<b>Comments :</b>			

## IsoLux Contour



## PHOTOMETRIC RESULT

<b>Name :</b>			
<b>File :</b>	02 MXLK-60.IES	<b>Length :</b>	0.000 m
<b>Report No. :</b>	20170518	<b>Width :</b>	0.000 m
<b>Catalog No. :</b>		<b>Height :</b>	0.000 m
<b>Lamp Shape :</b>	Point	<b>Operator :</b>	MIN
<b># of Lamp :</b>	1		
<b>Lum Flux :</b>	7683.03 lm		
<b>Date :</b>	2017-05-18		
<b>Comments :</b>			

## Illuminance Grid

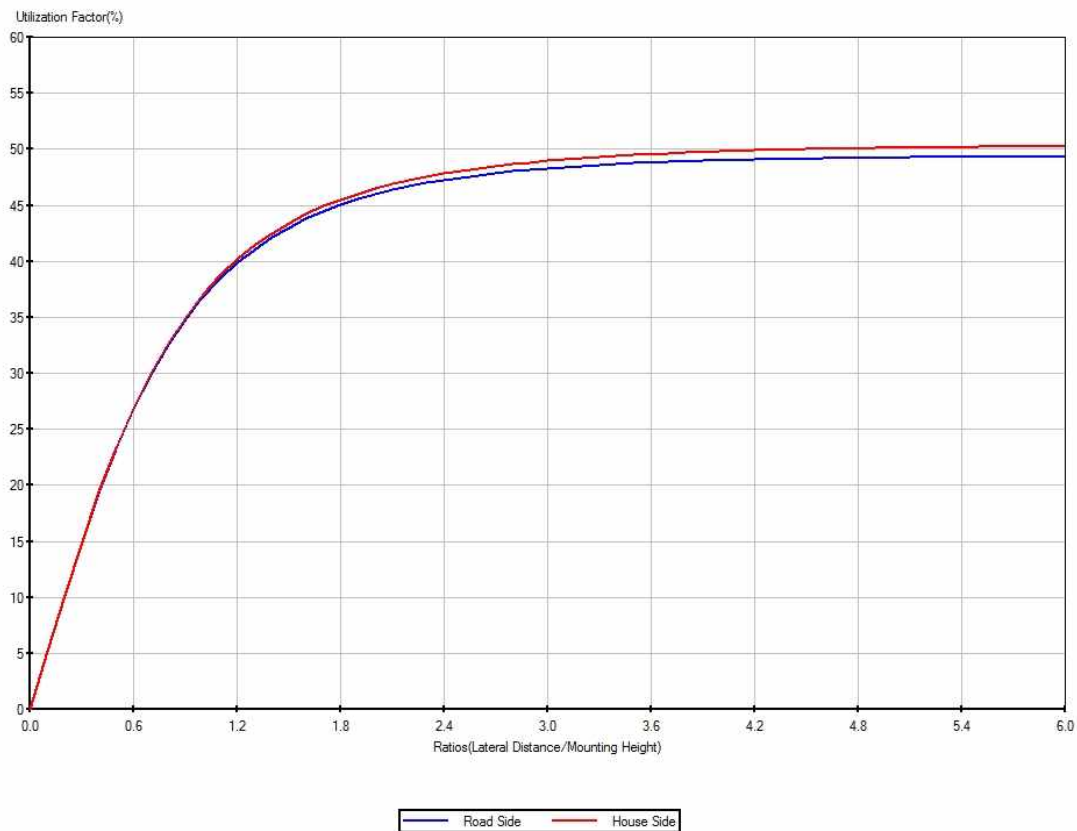
Y/X	-3.00	-2.50	-2.00	-1.50	-1.00	-0.50	0.00	0.50	1.00	1.50	2.00	2.50	3.00
3.00	29.6	37.6	46.4	55.6	64.0	69.8	72.0	69.6	63.6	55.0	45.7	36.8	28.9
2.50	37.4	48.8	62.3	76.8	90.6	100.5	104.2	100.2	90.1	76.0	61.4	47.9	36.5
2.00	46.4	62.2	82.0	104.5	126.5	143.1	149.3	142.7	125.7	103.5	80.8	61.1	45.3
1.50	55.5	76.9	104.4	137.4	171.1	197.8	207.6	197.1	170.1	136.1	103.0	75.5	54.4
1.00	63.0	90.5	126.5	171.1	218.8	257.4	272.4	256.6	217.7	169.6	124.9	88.9	62.5
0.50	67.1	97.8	140.1	194.7	257.3	306.6	325.8	306.0	256.2	195.8	141.4	98.9	68.4
0.00	72.6	105.0	150.2	208.7	273.5	326.8	346.2	325.6	271.3	206.0	147.4	102.4	70.3
-0.50	70.1	100.8	143.4	197.9	257.4	306.3	325.0	305.1	255.2	195.5	141.1	98.7	68.3
-1.00	64.0	90.5	126.2	170.7	218.1	256.3	270.7	255.3	216.4	168.7	124.2	88.7	62.4
-1.50	55.4	76.4	104.0	136.6	170.0	196.0	205.7	195.3	168.7	134.9	102.3	74.9	54.0
-2.00	46.0	61.8	81.2	103.4	125.3	141.6	147.5	141.0	124.2	102.2	79.9	60.5	44.8
-2.50	37.1	48.2	61.4	75.9	89.4	99.2	102.5	98.7	88.5	74.9	60.4	47.2	36.1
-3.00	29.2	36.8	45.6	54.7	62.9	68.7	70.5	68.3	62.2	54.0	44.9	36.0	28.4

All values in Lux, based on Luminaire Height of 2.7m  
 Table Values : Average=123.32, Max.=346.15, Min=28.40  
 Uniformity(minimum/average) =0.23

## PHOTOMETRIC RESULT

<b>Name :</b>			
<b>File :</b>	02 MXLK-60.IES	<b>Length :</b>	0.000 m
<b>Report No. :</b>	20170518	<b>Width :</b>	0.000 m
<b>Catalog No. :</b>		<b>Height :</b>	0.000 m
<b>Lamp Shape :</b>	Point	<b>Operator :</b>	MIN
<b># of Lamp :</b>	1		
<b>Lum Flux :</b>	7683.03 lm		
<b>Date :</b>	2017-05-18		
<b>Comments :</b>			

## UF Diagram



## PHOTOMETRIC RESULT

<b>Name :</b>			
<b>File :</b>	02 MXLK-60.IES	<b>Length :</b>	0.000 m
<b>Report No. :</b>	20170518	<b>Width :</b>	0.000 m
<b>Catalog No. :</b>		<b>Height :</b>	0.000 m
<b>Lamp Shape :</b>	Point	<b>Operator :</b>	MIN
<b># of Lamp :</b>	1		
<b>Lum Flux :</b>	7683.03 lm		
<b>Date :</b>	2017-05-18		
<b>Comments :</b>			

## UF Table [1/2]

Ratios(Distance/Mount Height)	Utilization Factor (Road Side)	Utilization Factor (House Side)
0.000	0.000	0.000
0.100	5.172	5.180
0.200	10.197	10.219
0.300	14.945	14.988
0.400	19.321	19.389
0.500	23.269	23.354
0.600	26.769	26.876
0.700	29.831	29.969
0.800	32.485	32.659
0.900	34.767	34.978
1.000	36.724	36.970
1.100	38.398	38.676
1.200	39.828	40.140
1.300	41.051	41.397
1.400	42.100	42.477
1.500	43.000	43.406
1.600	43.776	44.208
1.700	44.446	44.902
1.800	45.026	45.504
1.900	45.530	46.029
2.000	45.969	46.488
2.100	46.353	46.890
2.200	46.690	47.245
2.300	46.986	47.558
2.400	47.247	47.835
2.500	47.477	48.082
2.600	47.681	48.301
2.700	47.862	48.497
2.800	48.022	48.672
2.900	48.164	48.829
3.000	48.291	48.969
3.100	48.403	49.096
3.200	48.503	49.210
3.300	48.591	49.312

## PHOTOMETRIC RESULT

<b>Name :</b>			
<b>File :</b>	02 MXLK-60.IES	<b>Length :</b>	0.000 m
<b>Report No. :</b>	20170518	<b>Width :</b>	0.000 m
<b>Catalog No. :</b>		<b>Height :</b>	0.000 m
<b>Lamp Shape :</b>	Point	<b>Operator :</b>	MIN
<b># of Lamp :</b>	1		
<b>Lum Flux :</b>	7683.03 lm		
<b>Date :</b>	2017-05-18		
<b>Comments :</b>			

## UF Table [2/2]

Ratios(Distance/Mount Height)	Utilization Factor (Road Side)	Utilization Factor (House Side)
3.400	48.670	49.404
3.500	48.740	49.487
3.600	48.802	49.562
3.700	48.858	49.630
3.800	48.908	49.691
3.900	48.954	49.747
4.000	48.995	49.797
4.100	49.033	49.843
4.200	49.067	49.885
4.300	49.098	49.923
4.400	49.126	49.958
4.500	49.152	49.990
4.600	49.176	50.019
4.700	49.197	50.046
4.800	49.217	50.070
4.900	49.235	50.093
5.000	49.252	50.114
5.100	49.267	50.133
5.200	49.281	50.151
5.300	49.294	50.167
5.400	49.305	50.183
5.500	49.316	50.197
5.600	49.327	50.210
5.700	49.336	50.222
5.800	49.345	50.233
5.900	49.353	50.244
6.000	49.360	50.254



## PHOTOMETRIC RESULT

<b>Name :</b>			
<b>File :</b>	02 MXLK-60.IES	<b>Length :</b>	0.000 m
<b>Report No. :</b>	20170518	<b>Width :</b>	0.000 m
<b>Catalog No. :</b>		<b>Height :</b>	0.000 m
<b>Lamp Shape :</b>	Point	<b>Operator :</b>	MIN
<b># of Lamp :</b>	1		
<b>Lum Flux :</b>	7683.03 lm		
<b>Date :</b>	2017-05-18		
<b>Comments :</b>			

## IESNA Zonal-Cavity Coefficient Table

Ceiling Cavity Reflectance	80				70				50			30			10			0
Wall Reflectance	60	50	30	10	60	50	30	10	50	30	10	50	30	10	50	30	10	0
Room Cavity Ratio	Coefficients of Utilization for 10% Effective Floor Cavity Reflectance																	
0	1.09	1.09	1.09	1.09	1.08	1.08	1.08	1.08	1.05	1.05	1.05	1.03	1.03	1.03	1.01	1.01	1.01	1.00
1	0.99	0.97	0.94	0.91	0.98	0.96	0.93	0.90	0.94	0.91	0.88	0.91	0.89	0.87	0.89	0.87	0.86	0.84
2	0.89	0.85	0.80	0.75	0.87	0.84	0.79	0.74	0.82	0.77	0.73	0.80	0.76	0.72	0.78	0.75	0.72	0.70
3	0.80	0.75	0.68	0.62	0.78	0.74	0.68	0.62	0.72	0.66	0.62	0.70	0.65	0.61	0.68	0.64	0.60	0.58
4	0.72	0.67	0.59	0.53	0.71	0.66	0.59	0.53	0.64	0.58	0.52	0.62	0.57	0.52	0.61	0.56	0.51	0.49
5	0.65	0.60	0.52	0.46	0.64	0.59	0.51	0.45	0.57	0.51	0.45	0.55	0.50	0.45	0.54	0.49	0.44	0.42
6	0.60	0.54	0.46	0.40	0.58	0.53	0.45	0.40	0.52	0.45	0.39	0.50	0.44	0.39	0.49	0.43	0.39	0.37
7	0.55	0.49	0.41	0.35	0.54	0.48	0.41	0.35	0.47	0.40	0.35	0.46	0.39	0.34	0.45	0.39	0.34	0.32
8	0.50	0.45	0.37	0.31	0.49	0.44	0.36	0.31	0.43	0.36	0.31	0.42	0.35	0.31	0.41	0.35	0.31	0.29
9	0.47	0.41	0.33	0.28	0.46	0.41	0.33	0.28	0.40	0.33	0.28	0.39	0.32	0.28	0.38	0.32	0.27	0.26
10	0.43	0.38	0.30	0.25	0.43	0.37	0.30	0.25	0.37	0.30	0.25	0.36	0.29	0.25	0.35	0.29	0.25	0.23

## PHOTOMETRIC RESULT

<b>Name :</b>			
<b>File :</b>	02 MXLK-60.IES	<b>Length :</b>	0.000 m
<b>Report No. :</b>	20170518	<b>Width :</b>	0.000 m
<b>Catalog No. :</b>		<b>Height :</b>	0.000 m
<b>Lamp Shape :</b>	Point	<b>Operator :</b>	MIN
<b># of Lamp :</b>	1		
<b>Lum Flux :</b>	7683.03 lm		
<b>Date :</b>	2017-05-18		
<b>Comments :</b>			

## TM5 Utilisation Factor Table

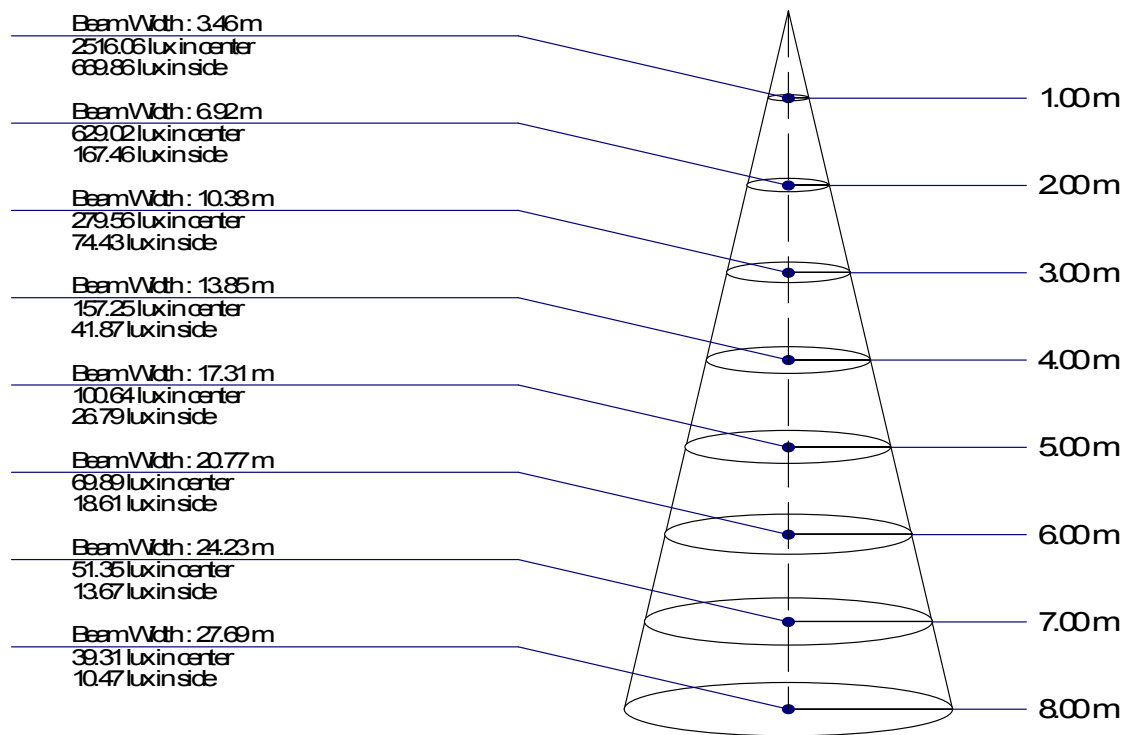
Utilisation Factor UFF standard Presentation			<i>SRNOV=1.50 SRMAX=1.53</i>								
Room Reflectance			Room Index								
C	W	F	0.75	1.00	1.25	1.50	2.00	2.50	3.00	4.00	5.00
0.70	0.50	0.20	0.59	0.68	0.76	0.81	0.88	0.93	0.97	1.01	1.04
	0.30		0.52	0.60	0.68	0.74	0.82	0.88	0.92	0.97	1.01
	0.10		0.46	0.54	0.63	0.69	0.77	0.83	0.88	0.94	20767
0.50	0.50	0.20	0.58	0.66	0.73	0.78	0.85	0.90	0.93	0.97	1.00
	0.30		0.51	0.59	0.67	0.72	0.80	0.85	0.89	0.94	0.97
	0.10		0.46	0.54	0.62	0.68	0.76	0.81	0.85	0.91	0.95
0.30	0.50	0.20	0.56	0.64	0.71	0.76	0.82	0.87	0.90	0.94	0.96
	0.30		0.50	0.58	0.65	0.71	0.78	0.83	0.86	0.91	0.94
	0.10		0.46	0.53	0.61	0.67	0.74	0.80	0.83	0.88	0.92
0.00	0.00	0.00	0.43	0.51	0.58	0.64	0.71	0.76	0.79	0.84	0.87
Distribution Factor		DR(F)	0.43	0.51	0.58	0.64	0.71	0.76	0.79	0.84	0.87
		DR(W)	0.57	0.49	0.42	0.36	0.29	0.24	0.21	0.16	0.13
		DR(C)	0.00	0.00	0.00	0.00	0.00	0.00	0.00	0.00	0.00
BZNumbers			4	4	4	4	4	4	4	4	4

Multiply UF values by service correction factors. Calculated in accordance with CIBS Technical Memorandum No.5 1980

## PHOTOMETRIC RESULT

<b>Name :</b>			
<b>File :</b>	02 MXLK-60.IES	<b>Length :</b>	0.000 m
<b>Report No. :</b>	20170518	<b>Width :</b>	0.000 m
<b>Catalog No. :</b>		<b>Height :</b>	0.000 m
<b>Lamp Shape :</b>	Point	<b>Operator :</b>	MIN
<b># of Lamp :</b>	1		
<b>Lum Flux :</b>	7683.03 lm		
<b>Date :</b>	2017-05-18		
<b>Comments :</b>			

## Conical Illuminance



**Average Beam Angle = 120.0°**  
**Max. Beam Angle = 120.1° at  $\Phi 1 = 70^\circ \sim \Phi 2 = 250^\circ$**   
**Min. Beam Angle = 118.6° at  $\Phi 1 = 170^\circ \sim \Phi 2 = 350^\circ$**

## PHOTOMETRIC RESULT

<b>Name :</b>			
<b>File :</b>	02 MXLK-60.IES	<b>Length :</b>	0.000 m
<b>Report No. :</b>	20170518	<b>Width :</b>	0.000 m
<b>Catalog No. :</b>		<b>Height :</b>	0.000 m
<b>Lamp Shape :</b>	Point	<b>Operator :</b>	MIN
<b># of Lamp :</b>	1		
<b>Lum Flux :</b>	7683.03 lm		
<b>Date :</b>	2017-05-18		
<b>Comments :</b>			

## CutOff Classification

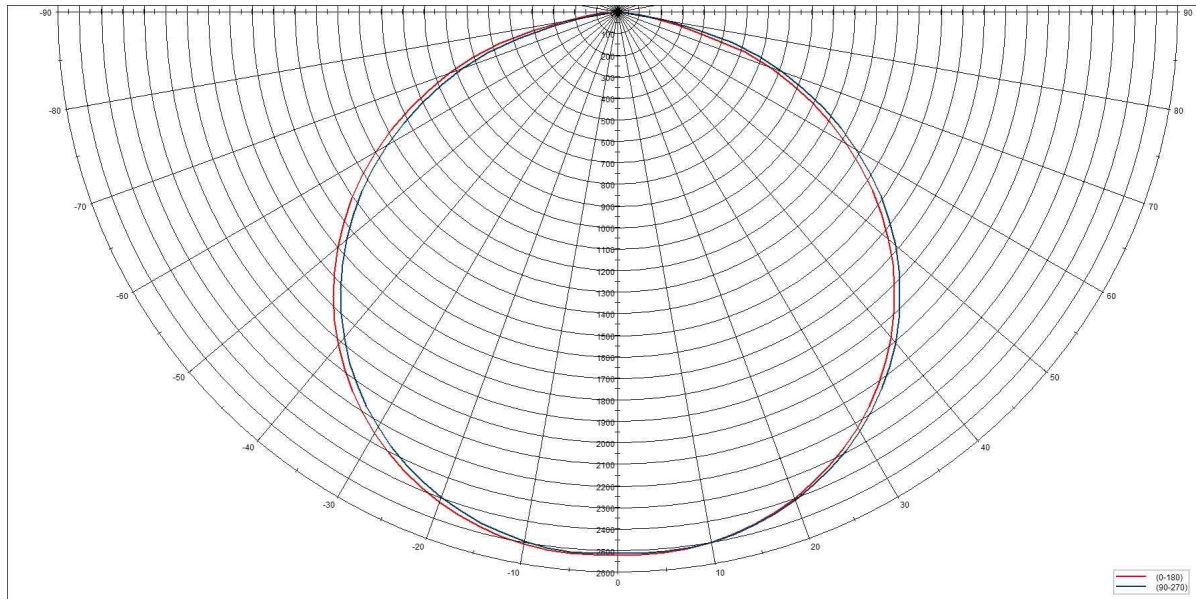
Classification	Candela at or above	
	90°	80°
Full Cutoff	0	<10%
Cutoff	<25%	<10%
Semicutoff	<5%	<20%
Noncutoff	NA	NA

Result		
Max. Candela	3283(cd/1000lm)	
Angle	90°	80°
cd/1000lm	2.11(cd/1000lm) : 0.64(%)	32.79(cd/1000lm) : 9.99(%)
Classification	Cutoff	

## PHOTOMETRIC RESULT

<b>Name :</b>			
<b>File :</b>	02 MXLK-60.IES	<b>Length :</b>	0.000 m
<b>Report No. :</b>	20170518	<b>Width :</b>	0.000 m
<b>Catalog No. :</b>		<b>Height :</b>	0.000 m
<b>Lamp Shape :</b>	Point	<b>Operator :</b>	MIN
<b># of Lamp :</b>	1		
<b>Lum Flux :</b>	7683.03 lm		
<b>Date :</b>	2017-05-18		
<b>Comments :</b>			

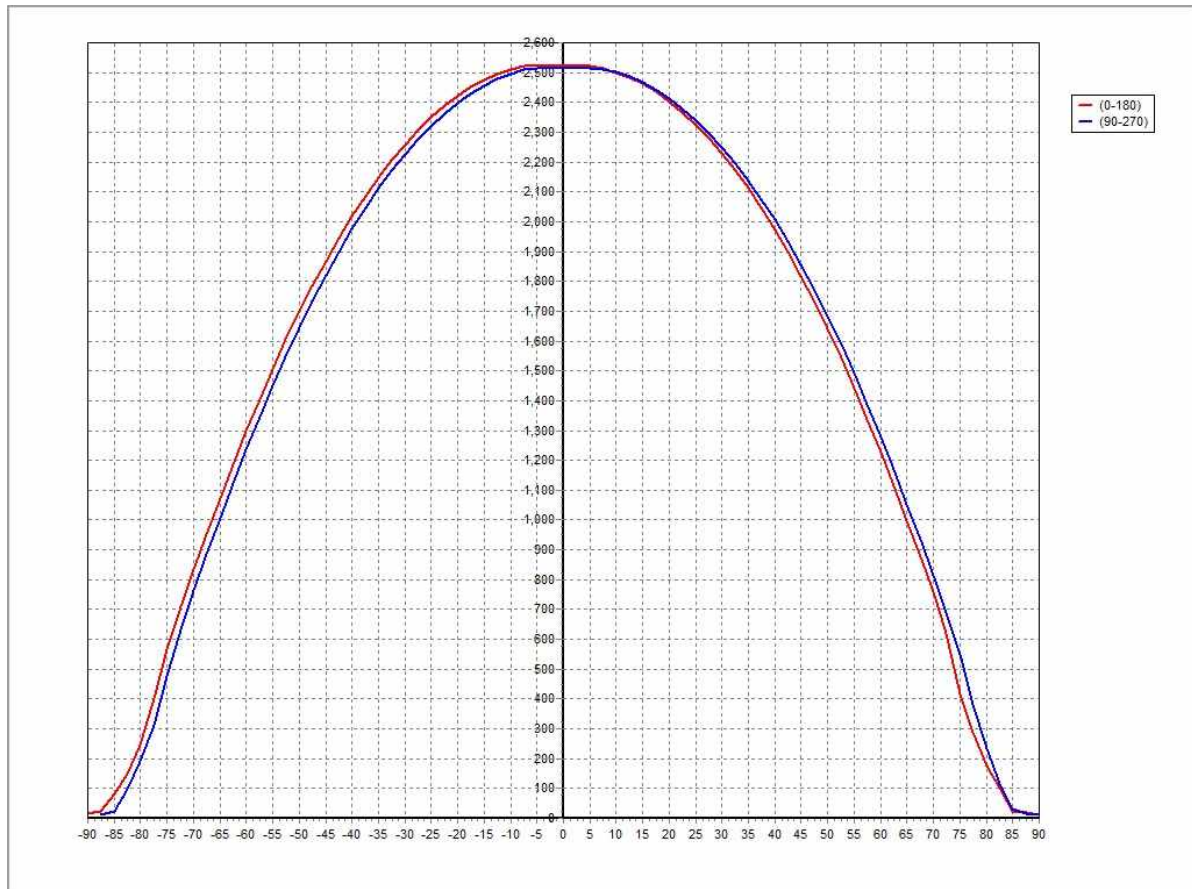
## Polar Distribution



## PHOTOMETRIC RESULT

<b>Name :</b>			
<b>File :</b>	02 MXLK-60.IES	<b>Length :</b>	0.000 m
<b>Report No. :</b>	20170518	<b>Width :</b>	0.000 m
<b>Catalog No. :</b>		<b>Height :</b>	0.000 m
<b>Lamp Shape :</b>	Point	<b>Operator :</b>	MIN
<b># of Lamp :</b>	1		
<b>Lum Flux :</b>	7683.03 lm		
<b>Date :</b>	2017-05-18		
<b>Comments :</b>			

## Cartesian Distrib.





## PHOTOMETRIC RESULT

<b>Name :</b>			
<b>File :</b>	02 MXLK-60.IES	<b>Length :</b>	0.000 m
<b>Report No. :</b>	20170518	<b>Width :</b>	0.000 m
<b>Catalog No. :</b>		<b>Height :</b>	0.000 m
<b>Lamp Shape :</b>	Point	<b>Operator :</b>	MIN
<b># of Lamp :</b>	1		
<b>Lum Flux :</b>	7683.03 lm		
<b>Date :</b>	2017-05-18		
<b>Comments :</b>			

### Average Luminaire Luminance [ $\text{cd}/\text{m}^2$ ]

Cannot calculate luminance for point source or Not Defined!

