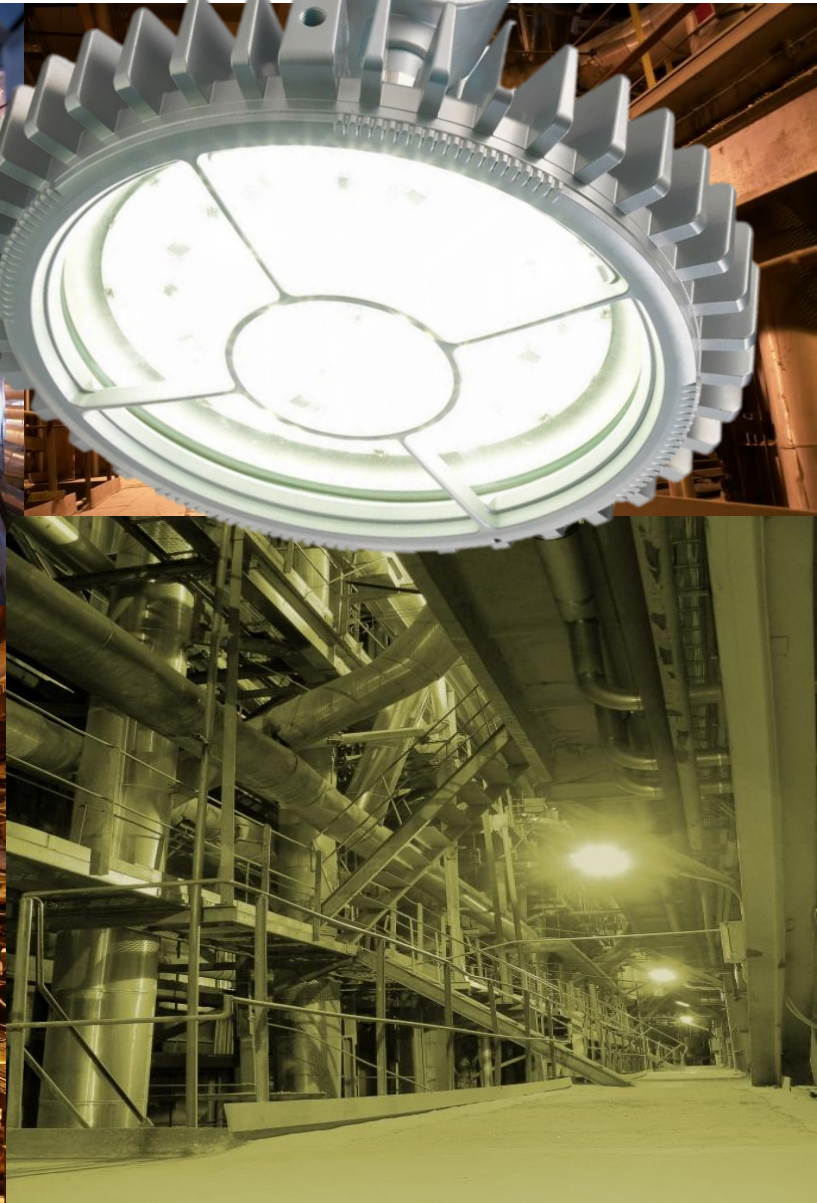
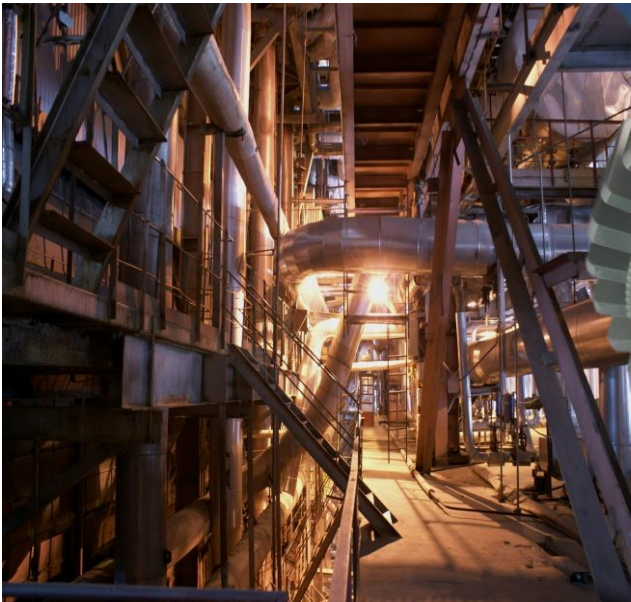
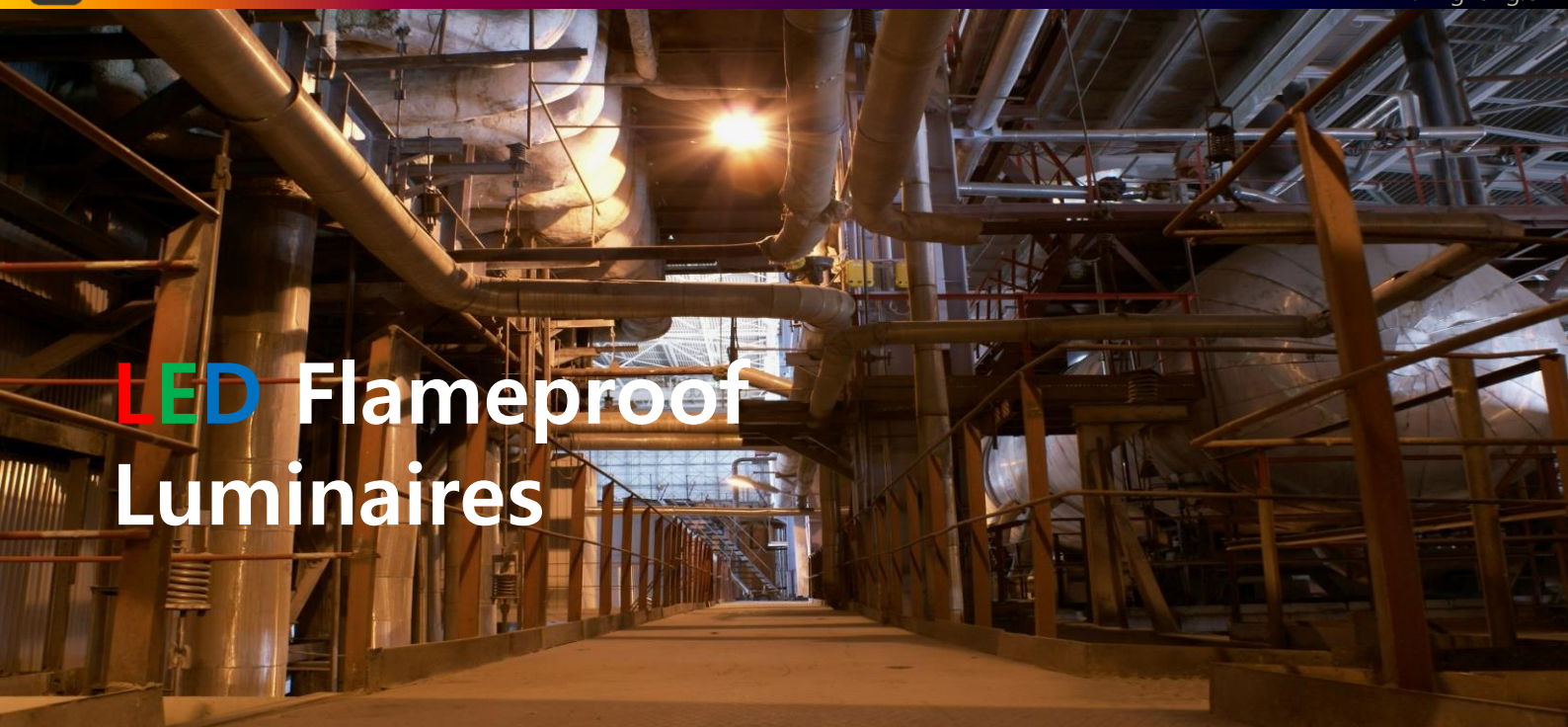


LED Explosion Proof

❖ MXL-90/100/120 ❖

❖ MXLK-45/60/80 ❖





LED Flameproof Luminaires

MXL LED Ex-Proof Lamps 90W/100W/120W

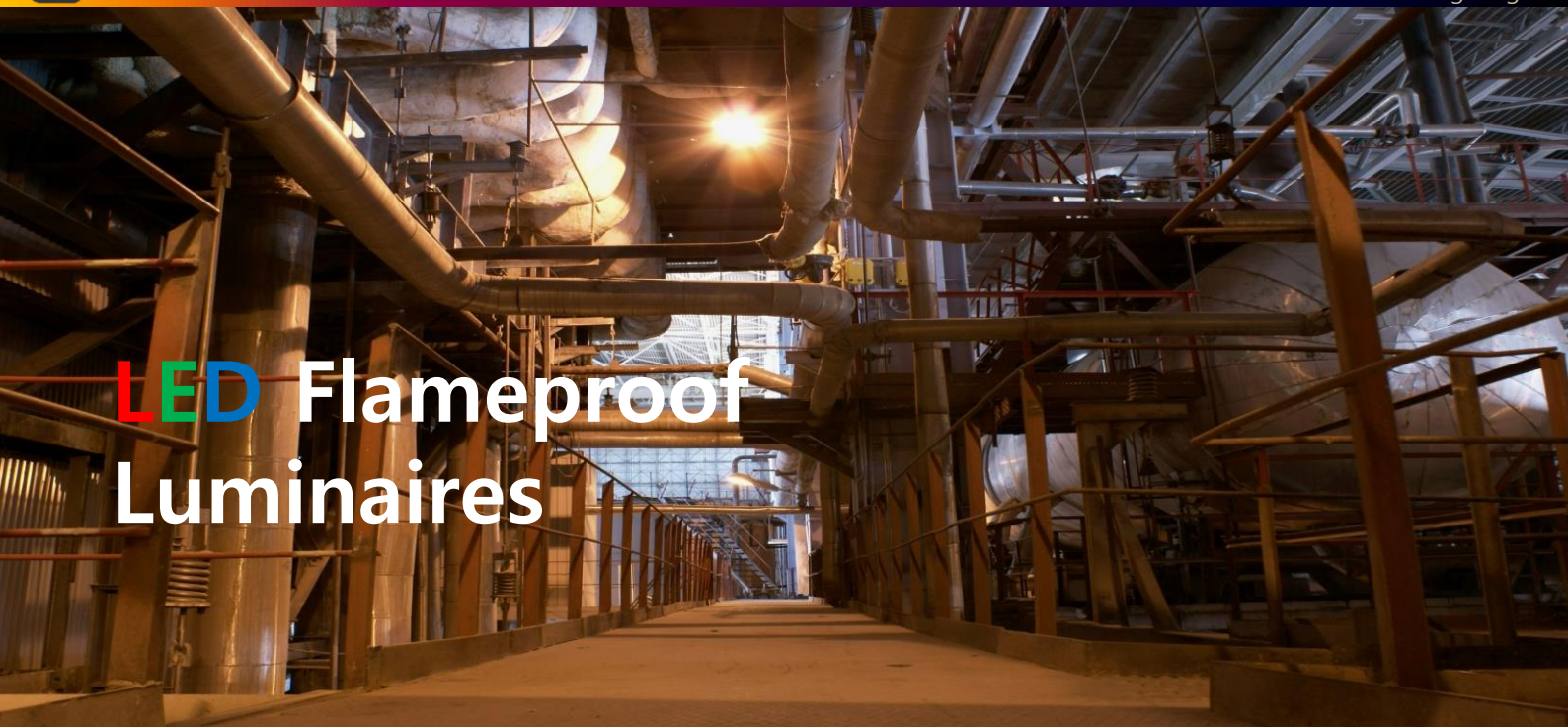
- Little trouble during operating and long life span due to **SMPS-less Ac Direct** driving
- **Simple** construction and **light weight**
- **Optimized** heat dissipation design ensures **LED performance** across all conditions
- **Hefty** power saving as **80W** LED lamp can replace enough the conventional **250W Metal Halide Lamps**.
- **High** luminous efficiency(over **120lm per watt**) and long-term **lumen maintenance** (LM80 equivalent or above)



Power Consumption	Total Flux	Efficiency	Color Temp.
90W	10800lm	120lm/W	5700K
Dimension(mm)	Weight	Beam Angle	Lifetime
Ø330x320(H)	7kg	120°	50,000hrs



Power Consumption	Total Flux	Efficiency	Color Temp.
100W	12000lm	120lm/W	5700K
Dimension(mm)	Weight	Beam Angle	LED Lifetime
Ø330x320(H)	7kg	120°	50,000hrs



LED Flameproof Luminaires



MXL-120

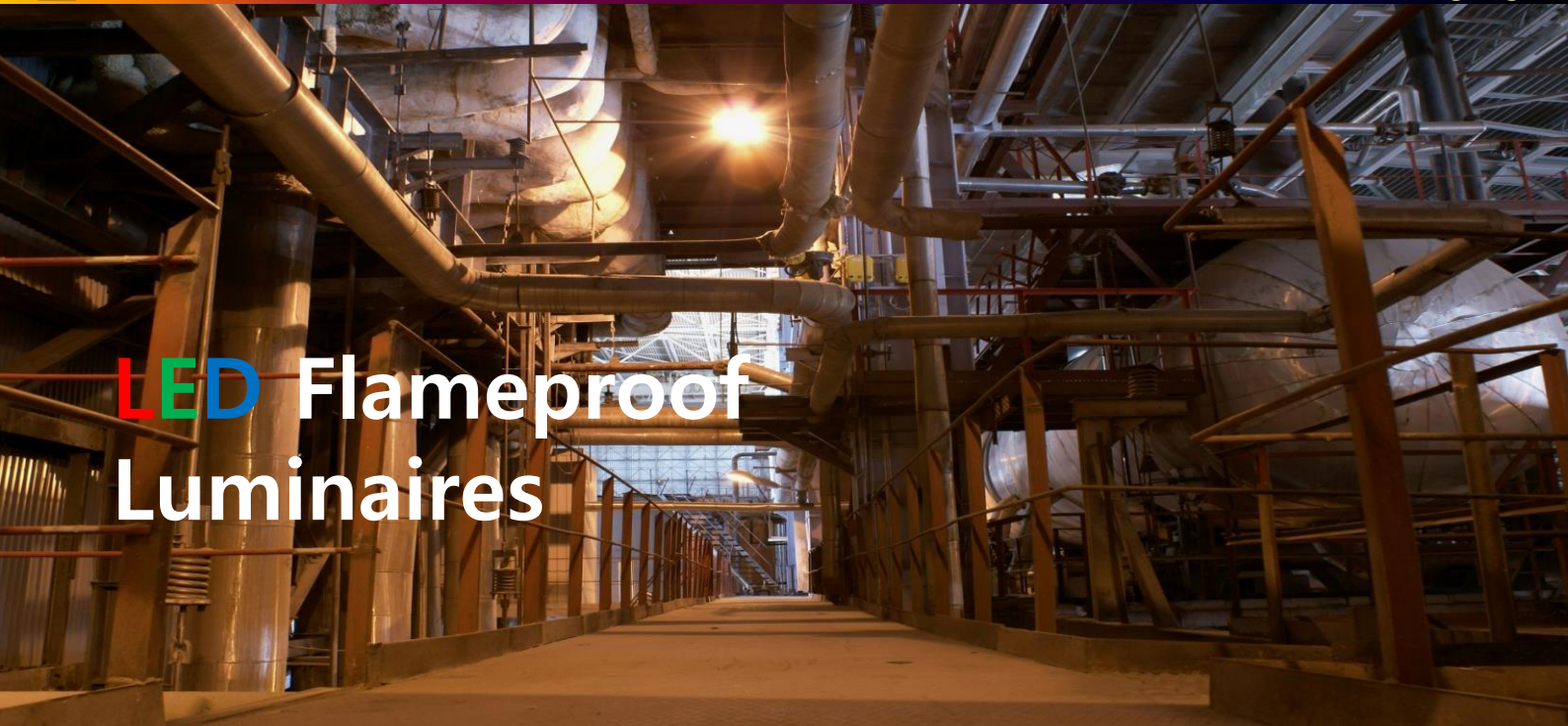
Power Consumption	Total Flux	Efficiency	Color Temp.
120W	14400lm	120lm/W	5700K
Dimension(mm)	Weight	Beam Angle	LED Lifetime
Ø330x320(H)	7kg	120°	50,000hrs

MXLK LED Ex-Proof Lamps 45W/60W/80W



MXLK-45

Power Consumption	Total Flux	Efficiency	Color Temp.
45W	5400lm	120lm/W	5700K
Dimension(mm)	Weight	Beam Angle	LED Lifetime
Ø270x250(H)	4.3kg	120°	50,000hrs



LED Flameproof Luminaires



MXLK-60

Power Consumption	Total Flux	Efficiency	Color Temp.
60W	7200lm	120lm/W	5700K
Dimension(mm)	Weight	Beam Angle	LED Lifetime
Ø270x250(H)	4.3kg	120°	50,000hrs



MXLK-80

Power Consumption	Total Flux	Efficiency	Color Temp.
80W	9600lm	120lm/W	5700K
Dimension(mm)	Weight	Beam Angle	LED Lifetime
Ø270x250(H)	4.3kg	120°	50,000hrs



Tel : 070-8890-0688 Fax : 0505-365-6262

MXL Specifications

Model	MXL-90/100/120
Mounting Types	Ceiling, Pendant, Bracket, Swivel
Power Consumption(W)	90/100/120
Input Voltage(V)	AC 220V
Frequency(Hz)	50/60
LED	LG Innotek
Color Temperature(K)	5700
Total Lumen(lm)	10800/12000/14400
Luminous Efficiency(lm/w)	120
Color Renderings(Ra)	86
Life Time	>50,000
Beam Angle	120°
Fixture Material	Aluminum Alloy(Powder Coated)
Lens	T8m/m Tempered Clear Glass
Operating Temperature	-40~60°
Power Factor	0.99
Size(mm)	D330mm, H320mm
Weight(kg)	7kg
Certification Grade	Exd IIC T6 IP66

Why LED Lighting?

Every day all the industrial factories and facilities should be turned up light, even they have hazardous atmosphere.

As you know, normal lamps can't be used in area where the combustible gases, vapors and dusts are present or likely to occur.

Until the present, most industrial areas that have hazardous environment have been using the conventional explosion proof luminaires, of which the lighting sources are discharge lamps such as metal halide, high pressure sodium, mercury lamps.

Recently the replacement the conventional lamps with LED ex-proof lightings are just beginning, for the advantages of LED lighting fixture, e.g. low power consumption, long lifetime and low maintenance costs.

However, above all the benefits, the most important thing is low surface temperature of LED lighting fixture.

Since the surface temperature of discharge lamp shell is nearly up to 300°C, somewhere there exists gases that have low auto ignition temperature, for instance, phosphorus, acetaldehyde, cyclohexane etc. might be dangerous, while the surface temperature of LED ex-proof lighting shell, -if its performance is in normal- never exceed the temperature of 70°C. That's the most important reason why the existing discharge lamps should be changed by LED ex-proof luminaires.

Consequently, it's the time to consider seriously for those who are related with hazardous facilities to introduce the LED ex-proof lightings to provide safer industrial environment.

Now we'd like to introduce our tried and true product that is most credible alternative to existing ex-proof luminaires.



Tel : 070-8890-0688 Fax : 0505-365-6262

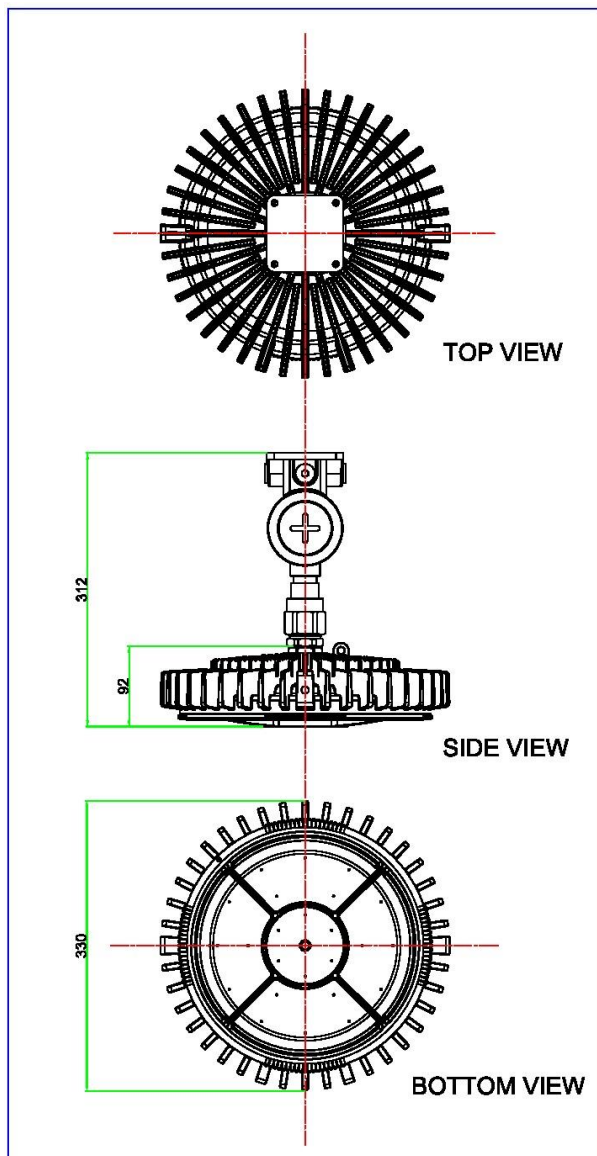
MXLK Specifications

Model	MXL-45/60/80
Mounting Types	Ceiling, Pendant, Bracket, Swivel
Power Consumption(W)	45/60/80
Input Voltage(V)	AC 220V
Frequency(Hz)	50/60
LED	LG Innotek
Color Temperature(K)	5700
Total Lumen(lm)	5400/7200/9600
Luminous Efficiency(lm/w)	120
Color Renderings(Ra)	86
Life Time	>50,000
Beam Angle	120°
Fixture Material	Aluminum Alloy(Powder Coated)
Lens	T8m/m Tempered Clear Glass
Operating Temperature	-40~60°
Power Factor	0.99
Size(mm)	D270mm, H250mm
Weight(kg)	4.3kg
Certification Grade	Exd IIC T6 IP66

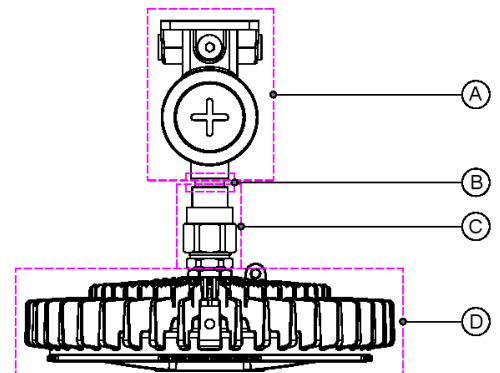


Tel : 070-8890-0688 Fax : 0505-365-6262

Outline Dimension-MXL



The Weight of Parts



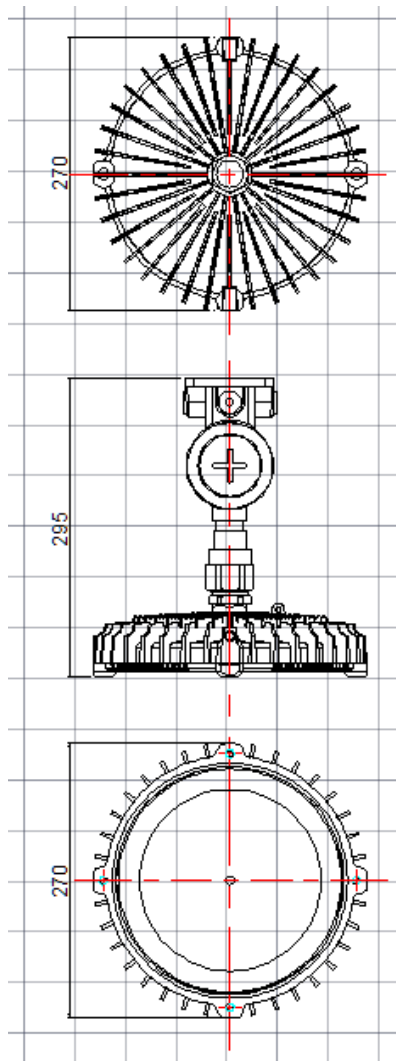
	Parts	Weight
A	Mounting Box	1,040
B	Nipple	80
C	Cable Gland	310
D	Main Body	5,500
	Total	6,930

Unit : gram

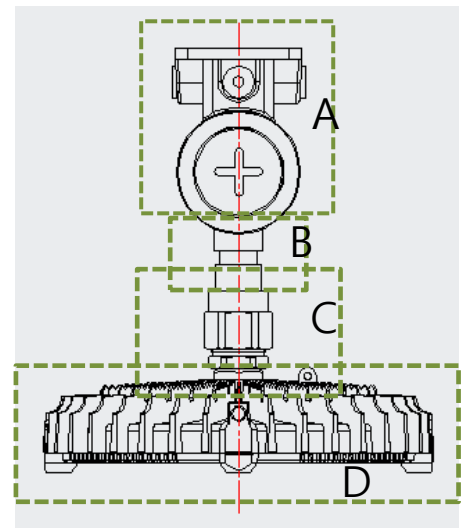


Tel : 070-8890-0688 Fax : 0505-365-6262

Outline Dimension-MXLK



The Weight of Parts



	Parts	Weight
A	Mounting Box	1,040
B	Nipple	80
C	Cable Gland	310
D	Main Body	2,870
	Total	4,300

Unit : gram



Tel : +82-70-7122-9868 Fax : +82-2-2627-5735

Protection Rate of MXL /MXLK Ex d IIC T6 IP66

The Codes of Protection Types

Flame Proof	d
Increased Safety	e
Intrinsic Safety	ia,ib
Pressurized Safety	p
Oil Immersion	o
Encapsulation	m

Temp. Codes of Fixture Surface

300 to 450°	T1
200 to 300°	T2
135 to 200°	T3
100 to 135°	T4
85 to 100°	T5
Under 85°	T6

Hazardous Area Classification

Zone 0	<ul style="list-style-type: none"> • Mine • The Area Which Is Inside of Tanks or Pits
Zone 1	Combustible or conductive dusts or gas are present. Area in which an explosive gas-air mixture is likely to occur in normal operation.
Zone 2	Area in which an explosive gas-air mixture is not likely to occur, and if it occurs it will only exist for a very short time due to an abnormal condition.